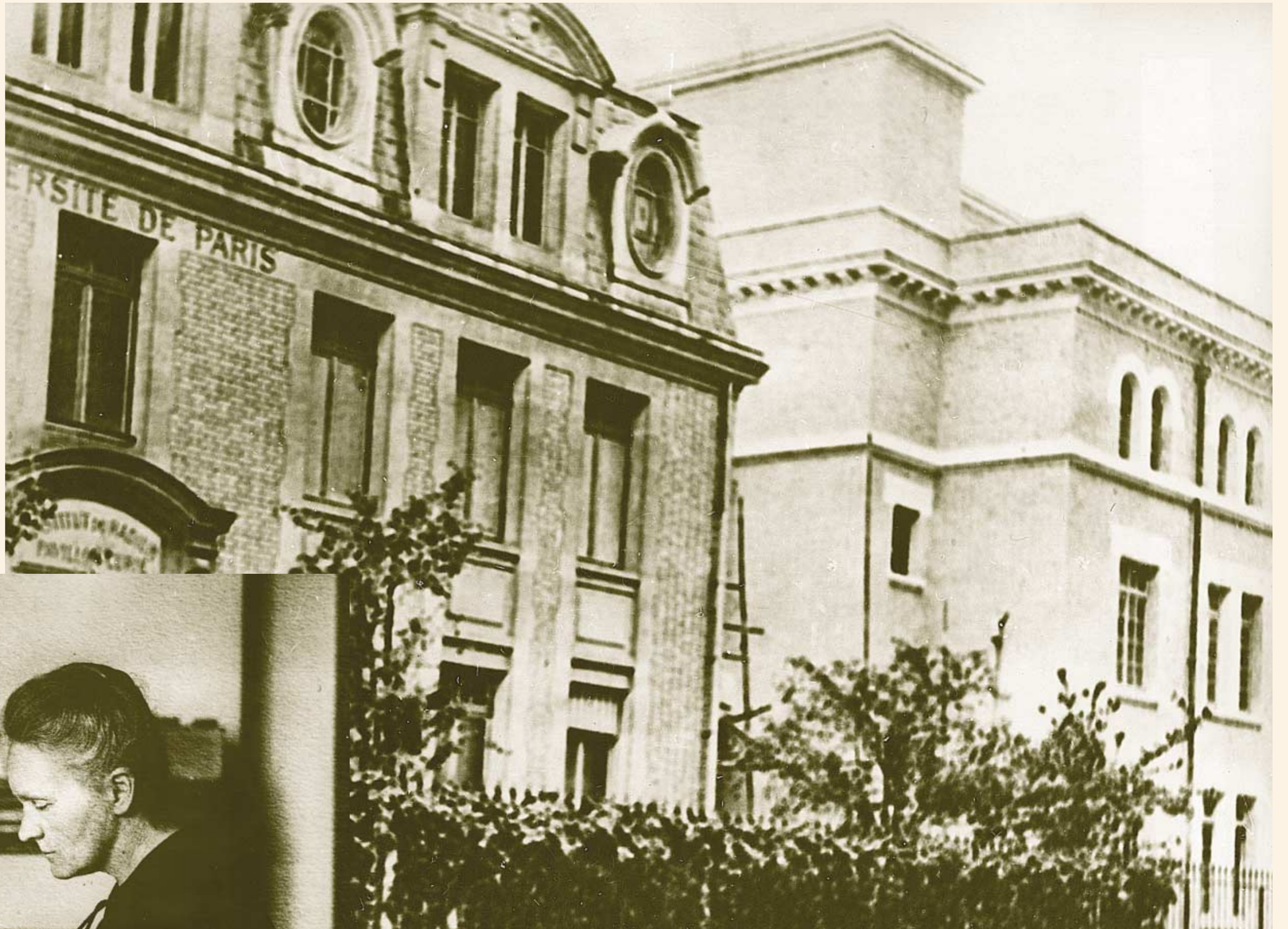


RADIUM INSTITUTES



The scientist with her daughter Irene in the laboratory of the Institute



Radium Institute in Paris



Maria Skłodowska-Curie in her office at the Radium Institute in Paris, 1925

„because of the appearance of this frail woman, all dressed in black, of such simplicity as to seem almost impoverished, made you feel pity and also her face was almost impassive, and her look abstracted to the point of total indifference”

S. Quinn, „Marie Curie a Life”



Maria Skłodowska-Curie plants a tree at Wawelska Street, 1932



Can with the charter of foundation of the Radium Institute in Warsaw



Radium Institute in Warsaw



The Institute was founded in 1932 from private donations - contribution stamps

*Mojam najgorętszym życzeniem jest foundation
Instytutu Radowego w Warszawie.
Maria Skłodowska Curie*