



**Jacek Kotra**

**The Science & Technology Park  
„TECHNOPARK GLIWICE” Ltd**



# **TECHNOPARK GLIWICE**

**- an environment for  
the commercialization of knowledge**

Brussels, 18th November 2010





Technopark Gliwice is a research and development institute, it creates a favourable climate for a business and it has a convenient infrastructure designed with a view to its locators. Moreover, the Park implements governmental, central and regional programmes of entrepreneurship support. „Technopark Gliwice” owns a property located in the heart of the Silesian University of Technology.

# „Technopark Gliwice” Ltd Company

- Founders:
  - The local authorities,
  - The Silesian University of Technology,
  - Katowice Special Economic Zone Co.
- Initial capital: 8.020.000,00 PLN
- ISO 9001:2001 Quality Management System
- „The innovative company of 2008”



# „TECHNOPARK GLIWICE” – INFRASTRUCTURE



## Our mission:

- **Promotion of entrepreneurship,**
- **Incubation of new technology companies,**
- **Technology transfer to SMEs.**

# PAT. PENDING

## BENEFITS OF TECHNOPARK'S ACTIVITIES

- Closeness to the University,
- Cooperation with innovative enterprises in the Park,
- Access to modern, fully equipped rooms,
- Availability of information,
- Flexible rental rates,
- Access to modern workshops and appliances,
- Numerous trainings and consultancy,
- Working in a favourable atmosphere,
- Creation of a positive image.

# History of „Technopark Gliwice”

- **April 4, 2004** – the Ltd Company came into being
- **July 5, 2005** – an agreement with the Agency of Industrial Development on co-financing park expansion project (the total value of the project was over 24.000.000 PLN)
- **October 10, 2006** – an agreement with the Agency of Industrial Development on co-financing the first „soft” project
- **June 30, 2008** – opening ceremony of the „Technopark Gliwice”





## **Formal cooperation with Science**

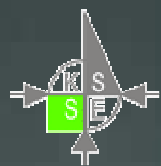
**The Park has signed agreements with:**

- 30 research unites (departments and institutes),**
- 4 universities ,**
- 4 Parks in Poland,**
- foreign institutions within the international project consortium.**

# Forms of cooperation with academic environment

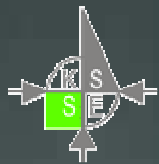
- **Conduction and promotion of technology data base,**
- **Support for academic entrepreneurship,**
- **Assistance in creation of companies gathering experts,**
- **Co-financing of micro-enterprises,**
- **Associating with business partners,**
- **Joint development projects for the science environment.**

- **Academic entrepreneurship** can be understood in two ways. The most common is defining academic entrepreneurship as any kind of involvement of scientific institutions, scholars, supporting workers, students and doctoral students in an economic activity.
- Including in the notion of academic entrepreneurship issues concerning setting up businesses by graduates or any companies created by researches (not based on intellectual property), it is an effect of the university inclusion to the set of key institutions for shaping entrepreneurship in society in general.\*



## Actions supporting academic entrepreneurship in the Science and Technology Park „TECHNOPARK GLIWICE”:

- over 1500 students and scientists who completed trainings participating in implemented projects,
- almost 1000 hours of counseling for scientists and students,
- co-financing of 26 created companies,
- 16 incubated enterprises in the building of the Park.



# The Day of Science and Industry

PATRONAT HONOROWY: MARSZAŁEK WOJEWÓDZTWA ŚLĄSKIEGO PREZYDENT MIASTA GLIWICE REKTOR POLITECHNIKI ŚLĄSKIEJ W GLIWICACH

PATRONAT MEDIALNY: TVS NOWINY

21 MAJ 2010

## DZIEŃ NAUKI I PRZEMYSŁU

**TECHNOPARK GLIWICE** ZAPRASZA:  
uczniów, studentów,  
przedstawicieli MŚP  
oraz wszystkich mieszkańców Śląska

**W programie:**  
Wirtualna rzeczywistość  
Interaktywne wizualizacje  
Pokazy cięcia maszyna WATERJET  
Pokaz działania robotów inspekcyjnych  
Tworzenie prototypów na RAPID PROTOTYPING  
Pomiary elementów na maszynie ZEISS ACCURA  
Ekspozycje Wydziałów Politechniki Śląskiej oraz firm Technoparku Gliwice i wiele innych ....



Park Naukowo-Technologiczny  
"TECHNOPARK GLIWICE" Sp. z o.o.  
ul. Konarskiego 18C  
44-100 Gliwice

tel: 032 335 85 00  
E-mail: targi@technopark.gliwice.pl  
www.technopark.gliwice.pl

**WSTĘP WOLNY !!! ZAPRASZAMY OD 10:00**

GLIWICE  
**TECHNO  
P  
ARK**





## Figures included in the benchmarking study (for 2008)

- The number of research projects – 8
- Residents conducting R&D studies – 8
- The number of techno starters – 8  
(15 )
- The number start-up companies – 7  
(28)
- The number of spin-off companies – 4  
(8)



# The cooperation between the Park's locators and the University

Of the 26 companies operating in the Park:

- All employ graduates from the Silesian University of Technology,
- Owners of 21 companies are scientific workers
  - a) of the University of Technology in Gliwice – 18
  - b) other universities – 3

## Subsidies:

- |                                    |                |
|------------------------------------|----------------|
| - 1.4 – 4.1 ROP Innovative Economy | - 1 company    |
| - 8.1 ROP Innovative Economy       | - 5 companies  |
| - My idea for a business           | - 6 companies  |
| - Other grants                     | - 5 companies  |
| - Projects for the University      | - 10 companies |
- (the largest worth 6.5000.000 PLN)

# Expert businesses in w TECHNOPARK GLIWICE





# Companies in w TECHNOPARK GLIWICE



PROFIS@WORK

i-HOME

MOBIT



fractalsoft

i3D  
free your dimensions



# Technopark Gliwice” - projects

Projects accomplished (two-year outlook) and during implementation:

- together with the **Silesian University of Technology,**

of  
**Education,**

**8.2.1,**

- with other **Partners,**

**5.2,**

- **individually**

of  
**Education,**

- 3 projects co-financed from financial resources  
**the Ministry of Science and Higher**

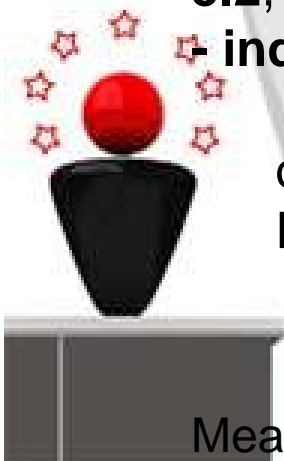
- 1 project - Śląskie Voivodship ROP, Sub-measure

- 1 project - Innovative Economy OP, Measure

- 2 projects co-financed from financial resources  
the Ministry of Science and Higher

- 4 projects within **Human Capital OP,**

The park is not on the list of key projects with innovative economy OP,  
Measure **5.4,**



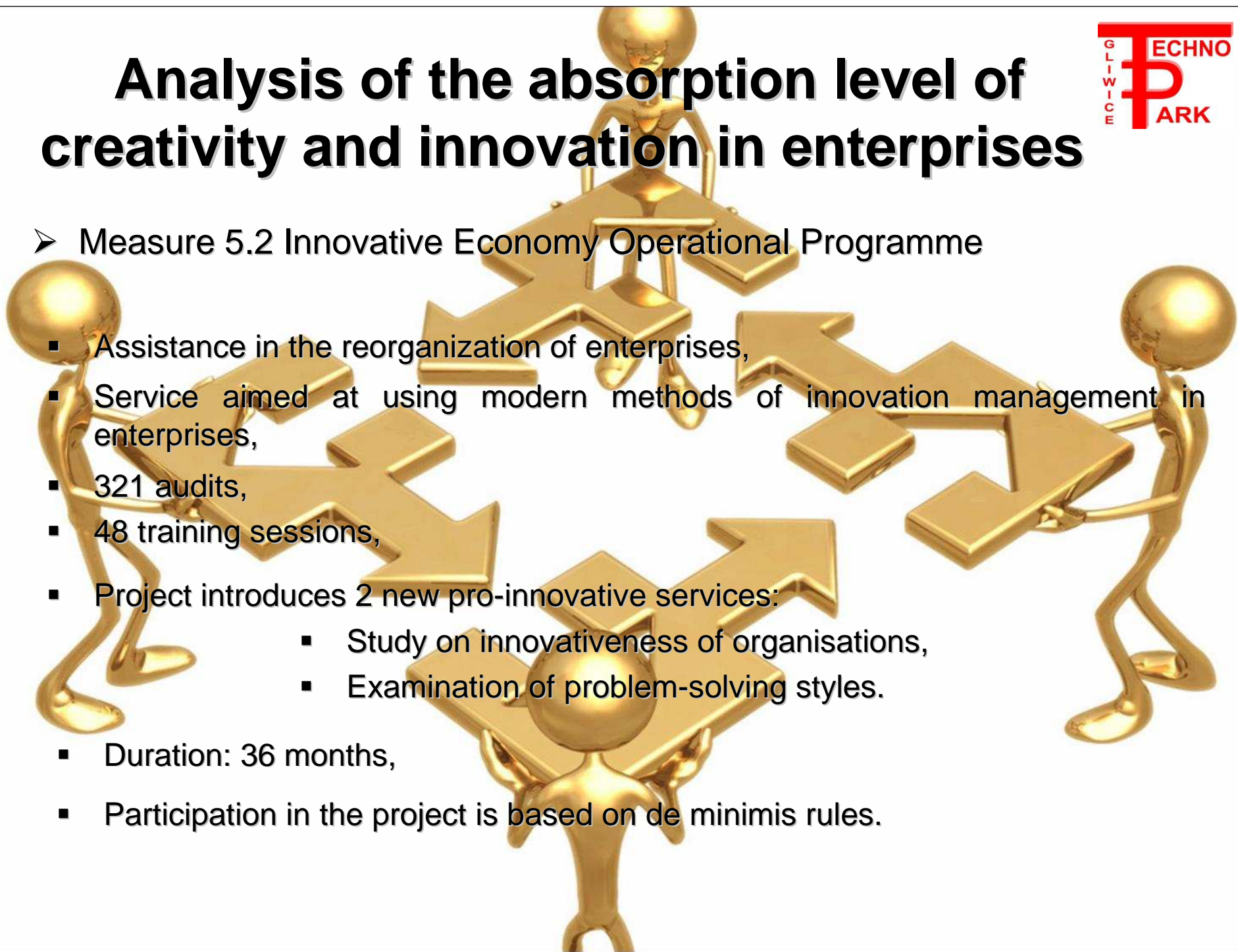
# The Enterprising Scientist

- 
- Measure 8.2.1 Human Capital OP
  - **The Enterprising Scientist is a project which is a supplement of the projects already implemented in the range of Creator of Innovation:**
    - Assistance in creating business concepts,
    - Training part is supplemented with an individual counseling,
    - 224 student and scientific workers were trained in accordance with the training plan developed by the Technopark Gliwice,
    - Project introduces 3 new training modules,
    - Duration: 18 months,
    - Participation in the project is free of charge for the participants.

# Analysis of the absorption level of creativity and innovation in enterprises

## ➤ Measure 5.2 Innovative Economy Operational Programme

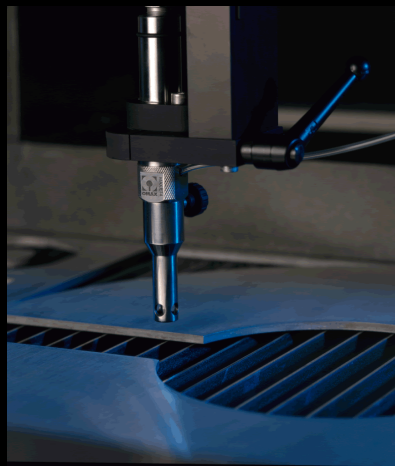
- Assistance in the reorganization of enterprises,
- Service aimed at using modern methods of innovation management in enterprises,
- 321 audits,
- 48 training sessions,
- Project introduces 2 new pro-innovative services:
  - Study on innovativeness of organisations,
  - Examination of problem-solving styles.
- Duration: 36 months,
- Participation in the project is based on de minimis rules.



# Cooperation with the University in the line of the technical equipment of the Park

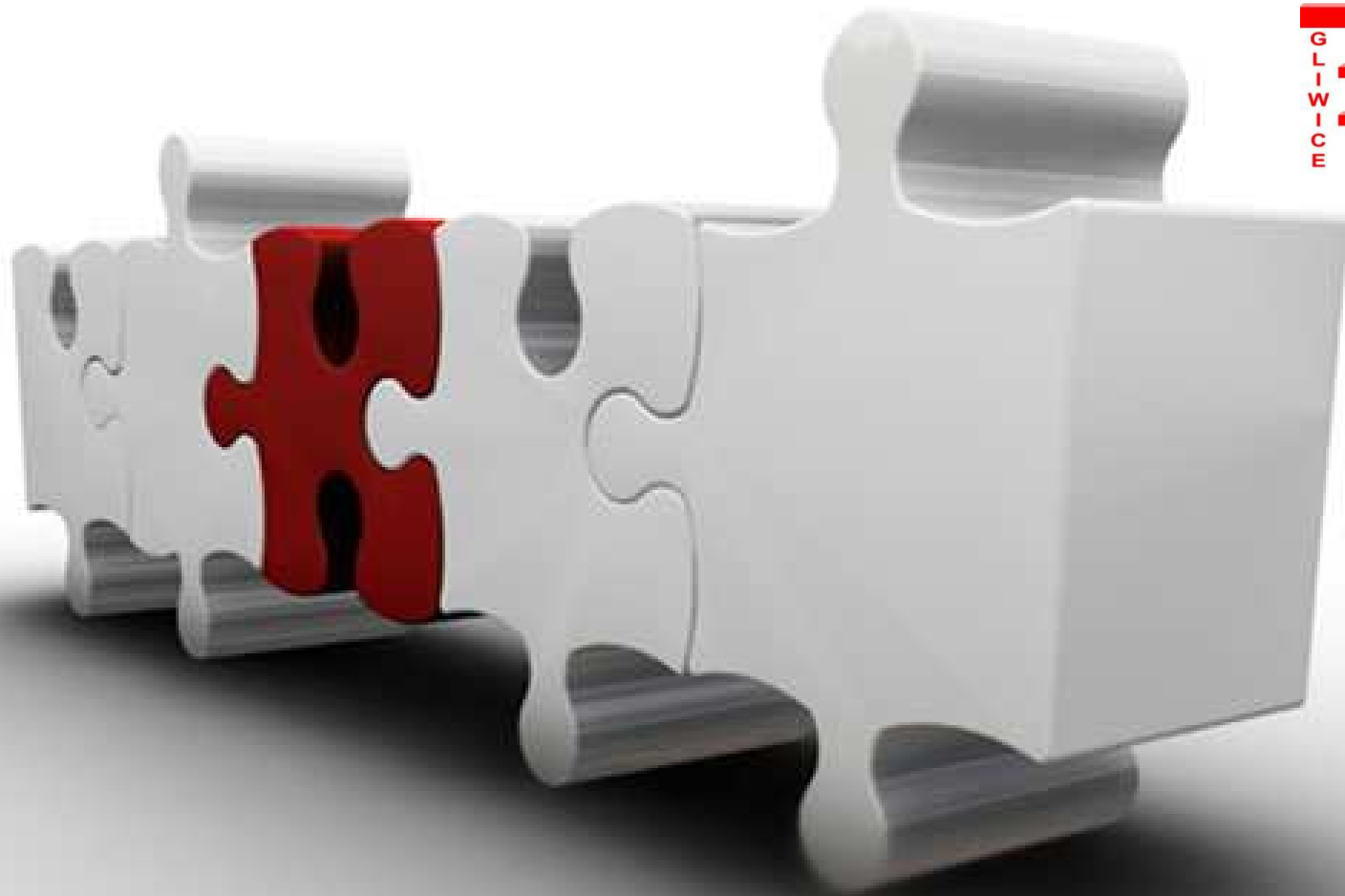


# Machine for high-pressure water jet cutting WATERJET



# Device for rapid prototyping using a technique of extruded material deposition STRATASYS type VANTAGE





Trainings are conducted in close cooperation with the scientific staff of the Silesian University of Technology and partially using the University infrastructure.



## „Technopark Gliwice” is:

- access to innovative equipment,
- highly qualified specialists,
- access to technical and personal resources of the Silesian University of Technology,
- 25 high-tech companies concentrated in the Park,
- experience in obtaining EU funding and implementation
- long-standing business partner strongly connected with  
of large projects



**[jacek.kotra@technopark.gliwice.pl](mailto:jacek.kotra@technopark.gliwice.pl)**

