

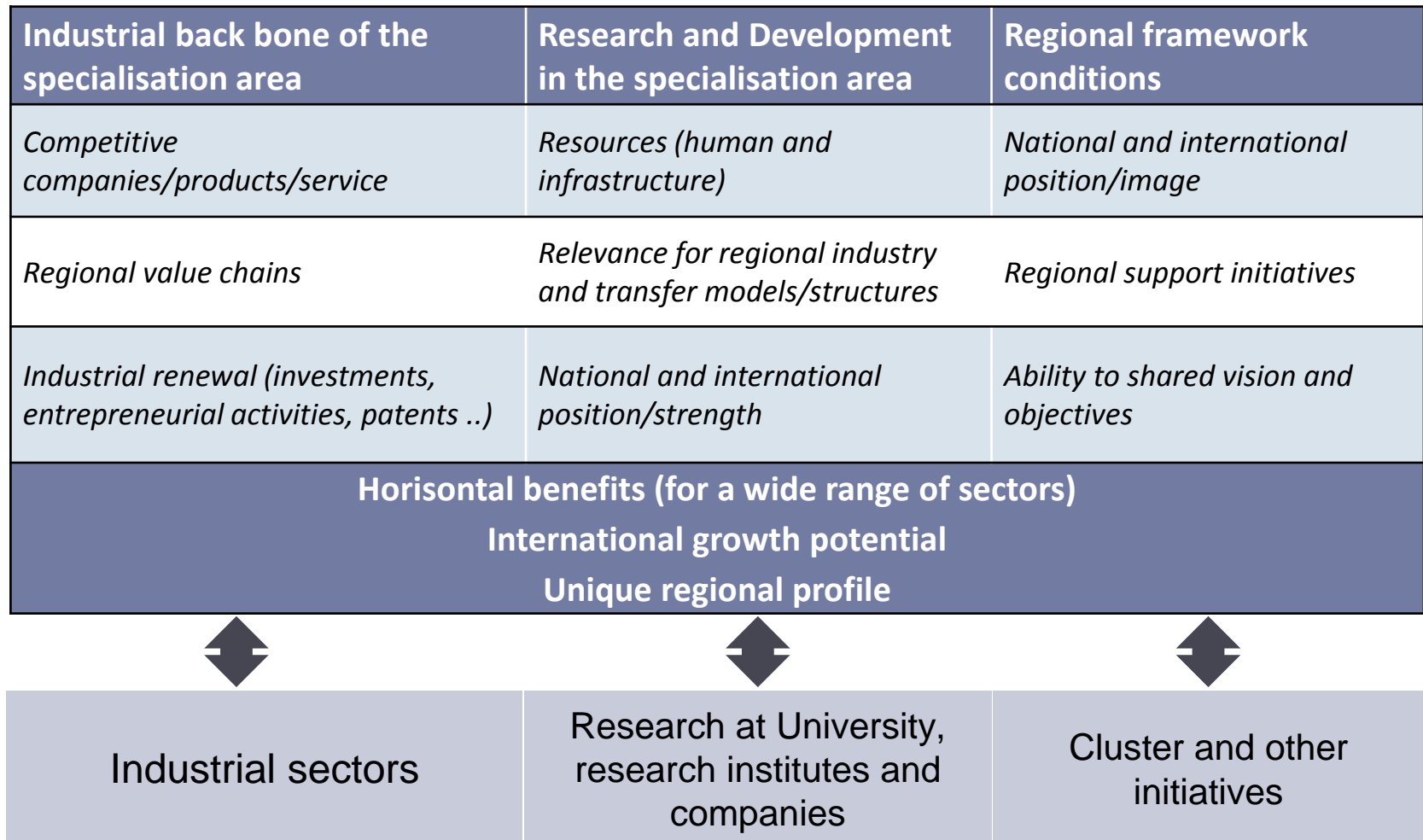
Smart Specialisation Strategy for Östergötland

Areas of strength



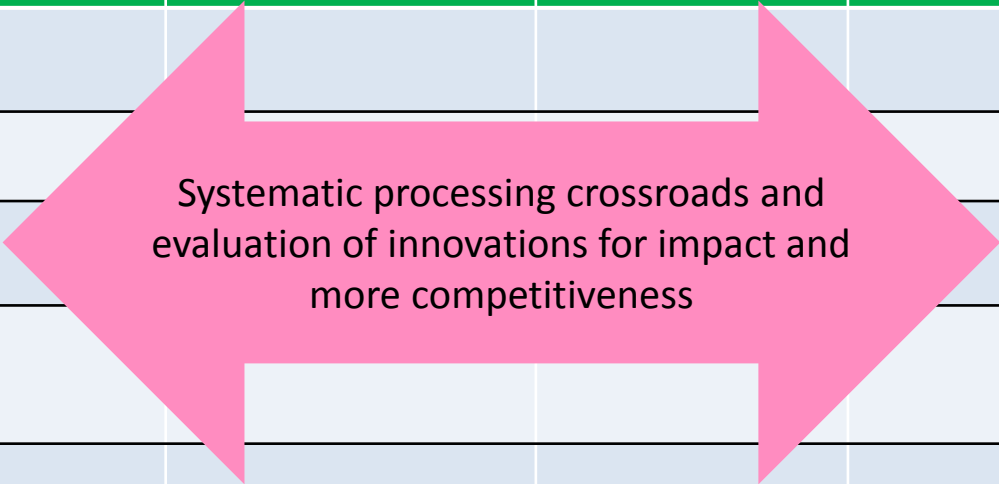
- **Efficient logistics** (for example goods, passenger and materials handling, processes for service delivery)
- **Business models and arenas for sustainable system solutions** (for example a biobased, circular economy, waste, energy)
- **Internet of Things** (for example secure, internet-integrated communications electronics, sensors, printed electronics)
- **Simulation and visualisation** (for example visualising complex data, interaction with virtual models, interactive media, games)
- **Advanced materials** (for example surface coatings for metals and plastic, nanostructured materials, for example graphene, biocompatible materials)

Framework for the analysis

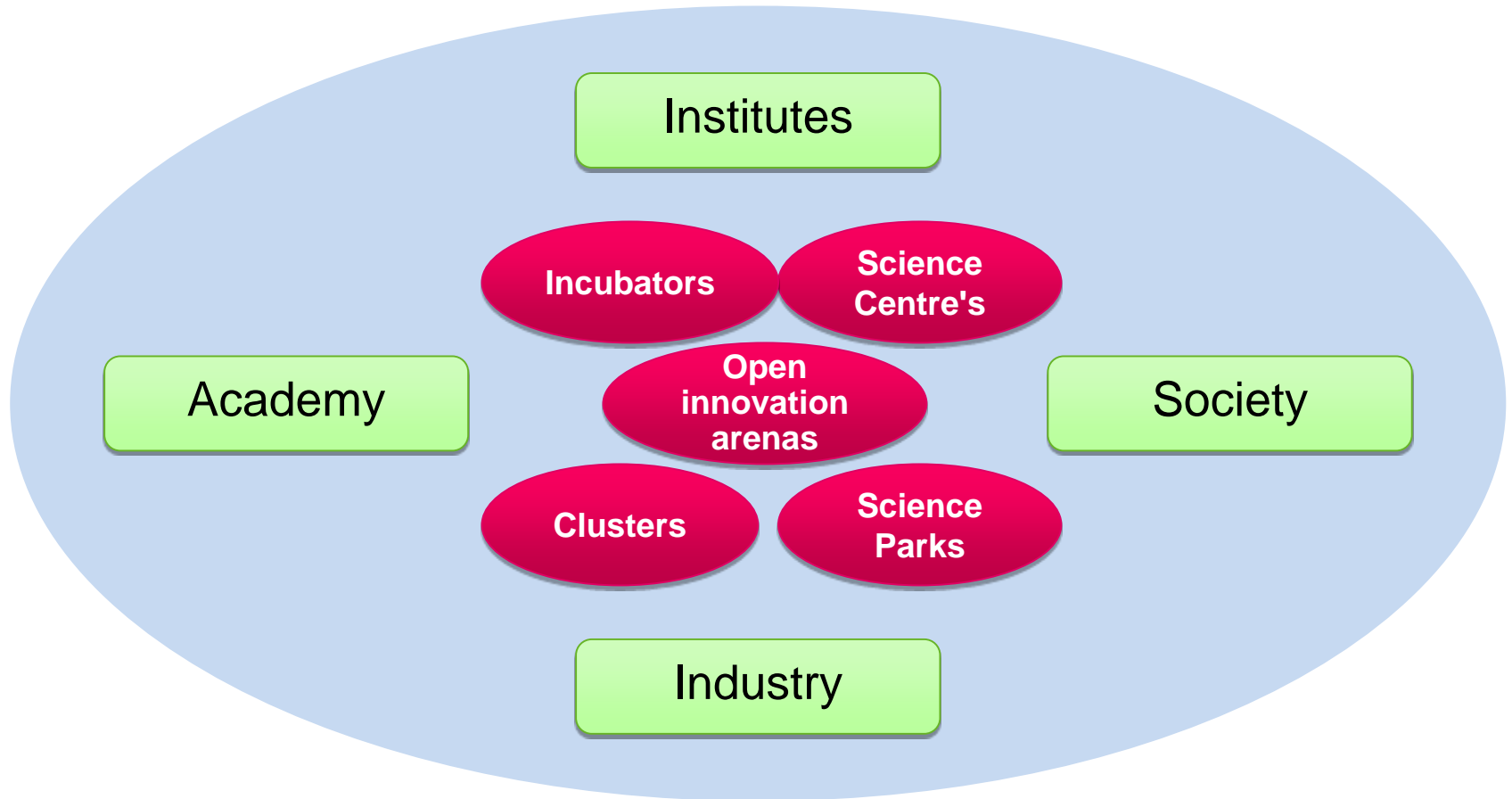


Working Smart

Application areas		Sustainable and resource efficient business development			
		Effective logistics	Visualization and Simulation	New industrial materials	Internet of Things
	Manufacturing				
	Tourism				
	Agricultural				
	Health sector				
	Transport				
	Trade and Commerce				



The eco-system



Driving development



Linköping University
Centre for
Medical Imaging



CRESEARCH



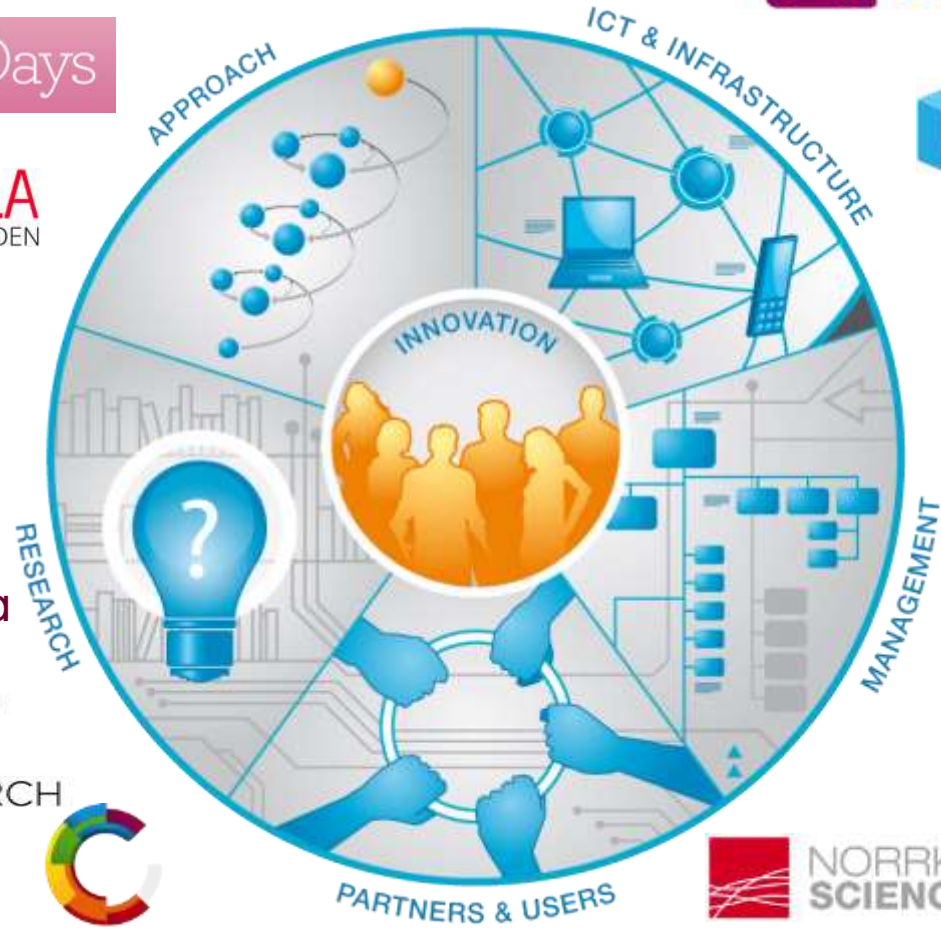
NORRKÖPINGS
VISUALISERINGSCENTER



Interactive & Visual Media
Cluster



EAST SWEDEN
BUSINESS REGION





ERRIN European Regions
Research and Innovation Network

ERRIN

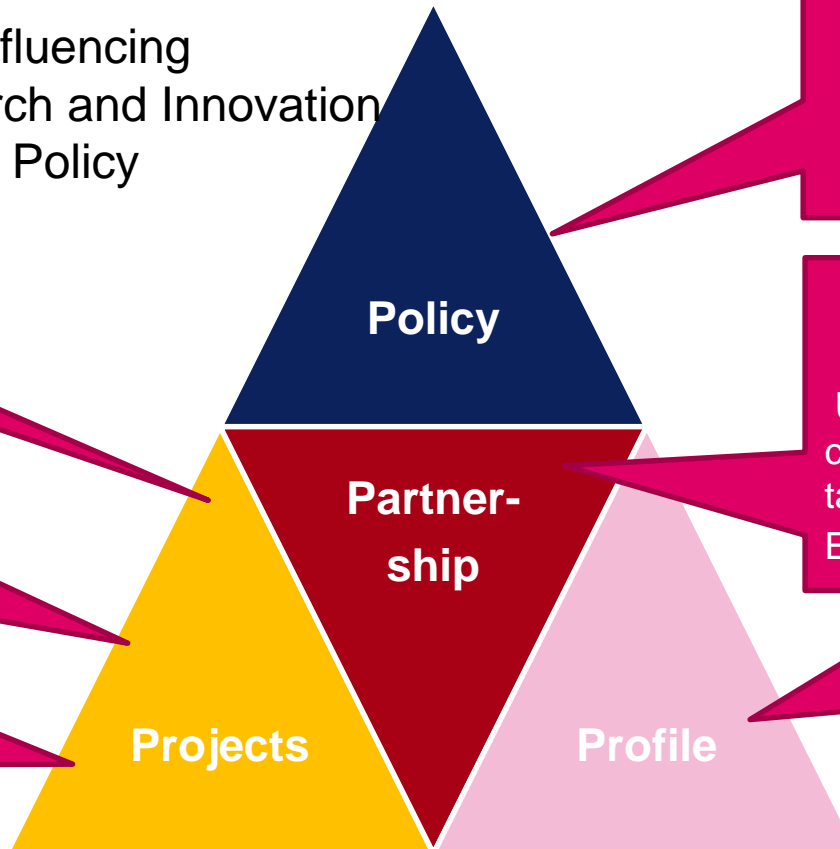
- **ERRIN** is a **Brussels-based** platform of **regions** strengthening regional **research and innovation** capacities by exchanging information, sharing best practice, supporting **Project development**, **Policy shaping** and **Profile raising**.
- **ERRIN**, with over 120 members, helps regions get their **voice heard** in Brussels and supports the implementation of the **Europe2020 Strategy**, the **Innovation Union** flagship initiative, **Smart Specialisation** and **Widening Participation**.

ERRIN Four Ps Influencing
EU Research and Innovation
Policy

Project brokerage
sessions Nov24th-
Nov 28th 2014
+650 participants

Partner Searches
on website
Interreg-Europe
Brokerage Event in
April 2015

ERRIN in
'SmartSpec Project'
with ten ERRIN
regions



Juncker Plan
Synergies
Smart specialisation
EIT Water

ERRIN supports joint
events
Universities: Code of
conduct and attracting
talent (Eurotech, ECIU,
EUA) June 11th

Average of +2
events/invitations to
speak per week

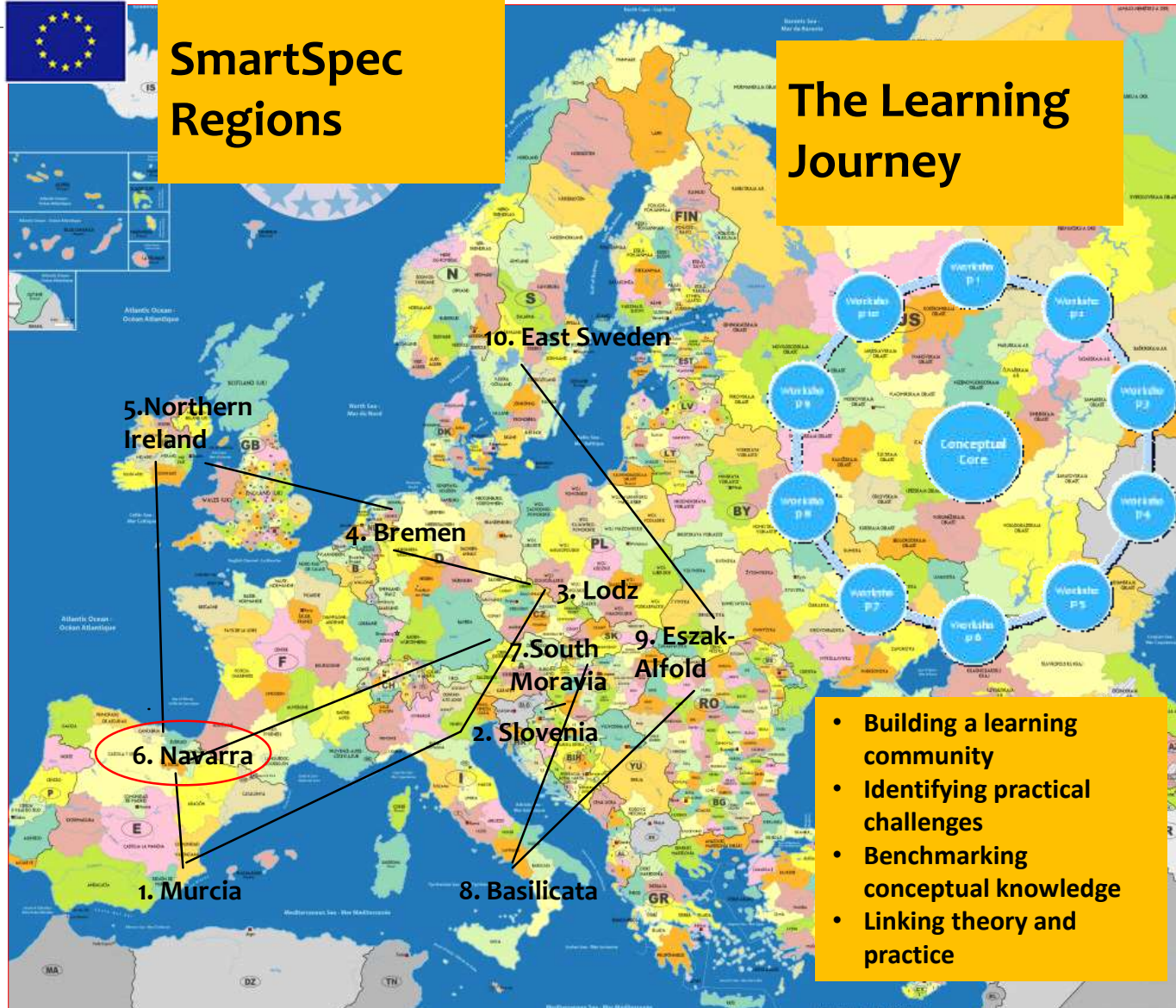
Supporting project development and
engaging ERRIN regions in EU projects

Raising the profile of ERRIN
and member regions in Brussels



SmartSpec Regions

The Learning Journey



- Building a learning community
- Identifying practical challenges
- Benchmarking conceptual knowledge
- Linking theory and practice

Thank you for your attention!