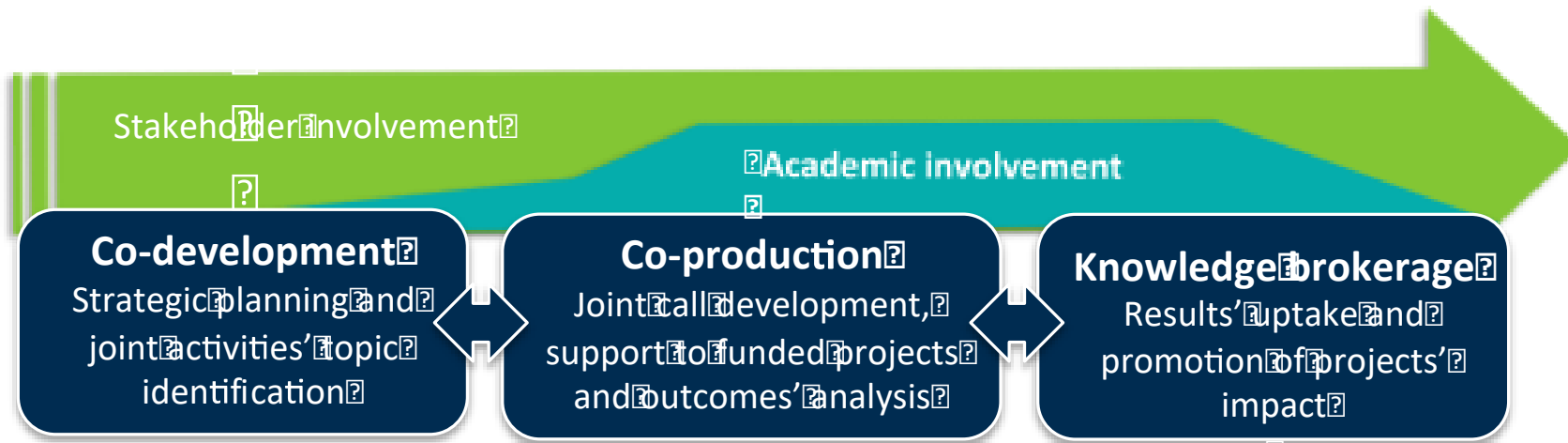


Why societal/policy impact?



The Biodiversa approach: involving stakeholders at every step of the research process



After Mauser et al., 2013

Why societal/policy impact?

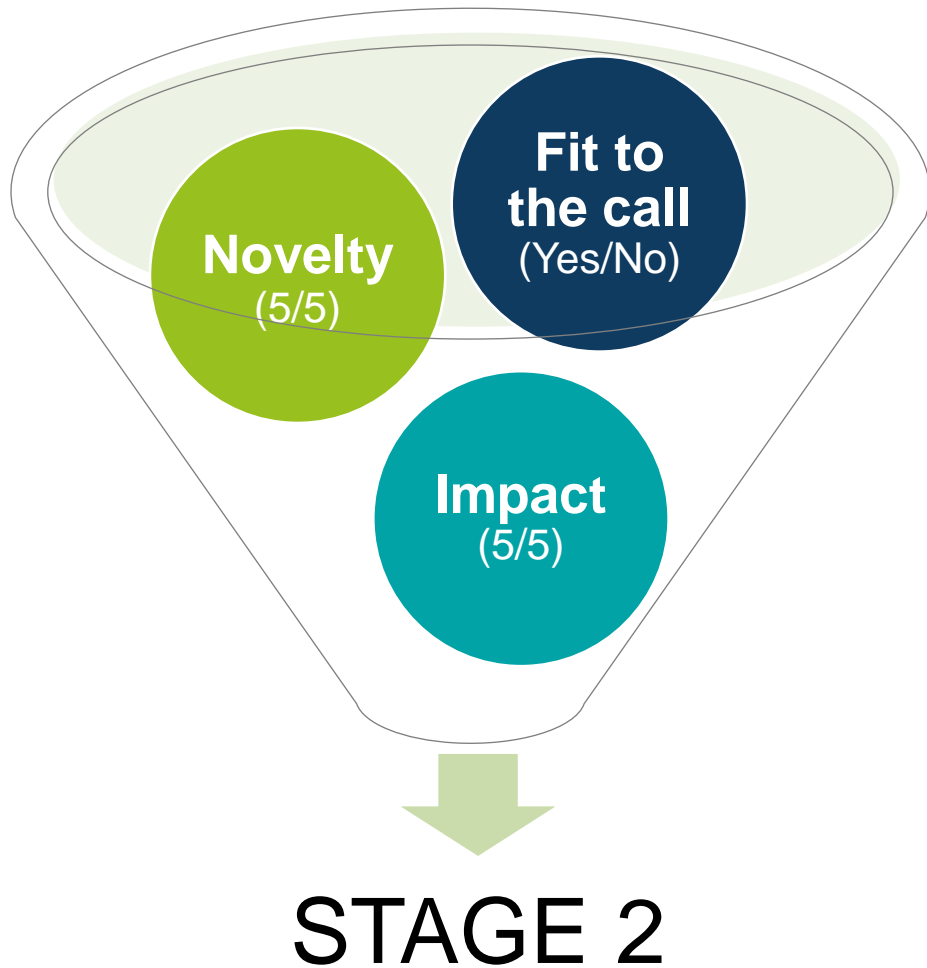


The Biodiversa approach: involving stakeholders at every step of the research process



After Mauser et al., 2013

Why societal/policy impact?



Proposals will be evaluated on both scientific excellence and impact on policy and management issues.

- clear research questions with tractable and testable hypotheses
- clearly explain expected societal and policy impact as well as planned stakeholder engagement

Impact sub-criteria in step 1:

a) Expected contribution of the proposed research to society and/or policy:

- > Added value contribution for tackling societal and/or policy challenges?
- > Credible approach/ambition towards stakeholder and/or end-user engagement to achieve the expected impact

b) Transnational added value: also from the perspective of society and/or policy

Why societal/policy impact?



Requirements for research proposals on policy relevance and engagement, i.e.

- Clarify why the proposal is relevant
- Indicate expected policy/societal impacts
- Detail activities and resources planned for SSI/SPI

Realize this can be difficult to do, and requires specific skills

- Increasing need for science-based assessments for decision-makers operating with unknown, uncertain or fuzzy parameters
- Requires minimal knowledge of decision-making processes, challenges and landscape

Our view: **excellent science can be the basis for sound and effective decision making and implementation**, but often this is insufficient for uptake

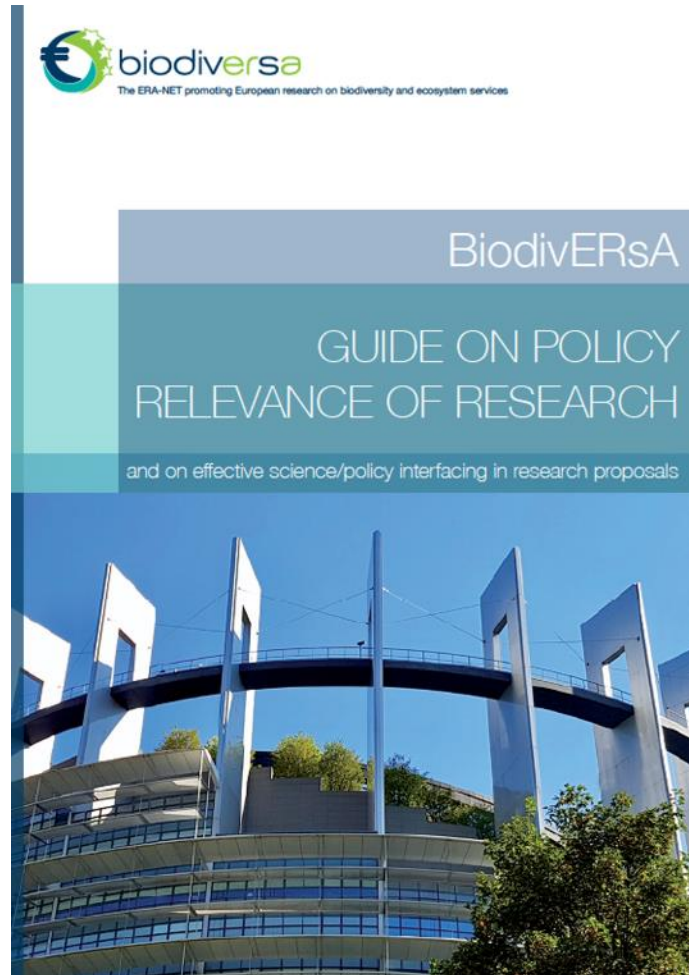
- Need for additional steps to facilitate uptake into society/policy
- Recognize uptake into society/policy can fail still, despite researchers' and stakeholders best efforts

Focus on developing policy relevance and effective science-policy interfacing in your proposals

Biodiversa guide on policy relevance and effective science-policy interfacing in research proposals (draft update in sept. 2023)

BiodivERsA Guide on policy relevance of research

Draft update Sept. 2023



Lemaitre F., Bridgewater P., Eggermont H., Gardner S., Hueso K., Pereira Martins I., Thornton A. & Le Roux X. (2018). BiodivERsA guide on policy relevance of research and on effective science/policy interfacing in research proposals. BiodivERsA report, 80 pp.

Built around the 4 S.I.E.V. elements

- S** **State** clearly and demonstrate the policy relevance of your research
- I** **Identify** which policy stakeholders you want to engage
- E** **Engage** with policy stakeholders
- V** **Value** the European and international policy implications of your research

BiodivERsA Guide on policy relevance of research

Draft update Sept. 2023



S.

State

State clearly and demonstrate the policy relevance of your research proposal

Understand what is meant by policy relevance

- in the context of BiodivERsA calls, policy relevant research is research that seeks to provide relevant knowledge to policy makers

Think about the kind(s) of policy relevance of your work

Examples of categories adapted after Shaxson, 2010

- Non aligned: topic of broad policy interest, but not at all aligned with policy priorities
- Policy interest: topic broadly aligned with policy priorities, not directly in line with specific priorities and needs from policy
- High-level alignment: topics and evidence to be produced are aligned with policy priorities in a wide sense, and implemented by researchers only
- Explicit policy relevance: choice of research topics and activities is directly inspired by policy priorities and needs, and stakeholders are associated
- Knowledge co-produced with policy stakeholders: collaborate on knowledge production and related outputs (often requires multi-disciplinary/participatory methods for engaging)

BiodivERsA Guide on policy relevance of research

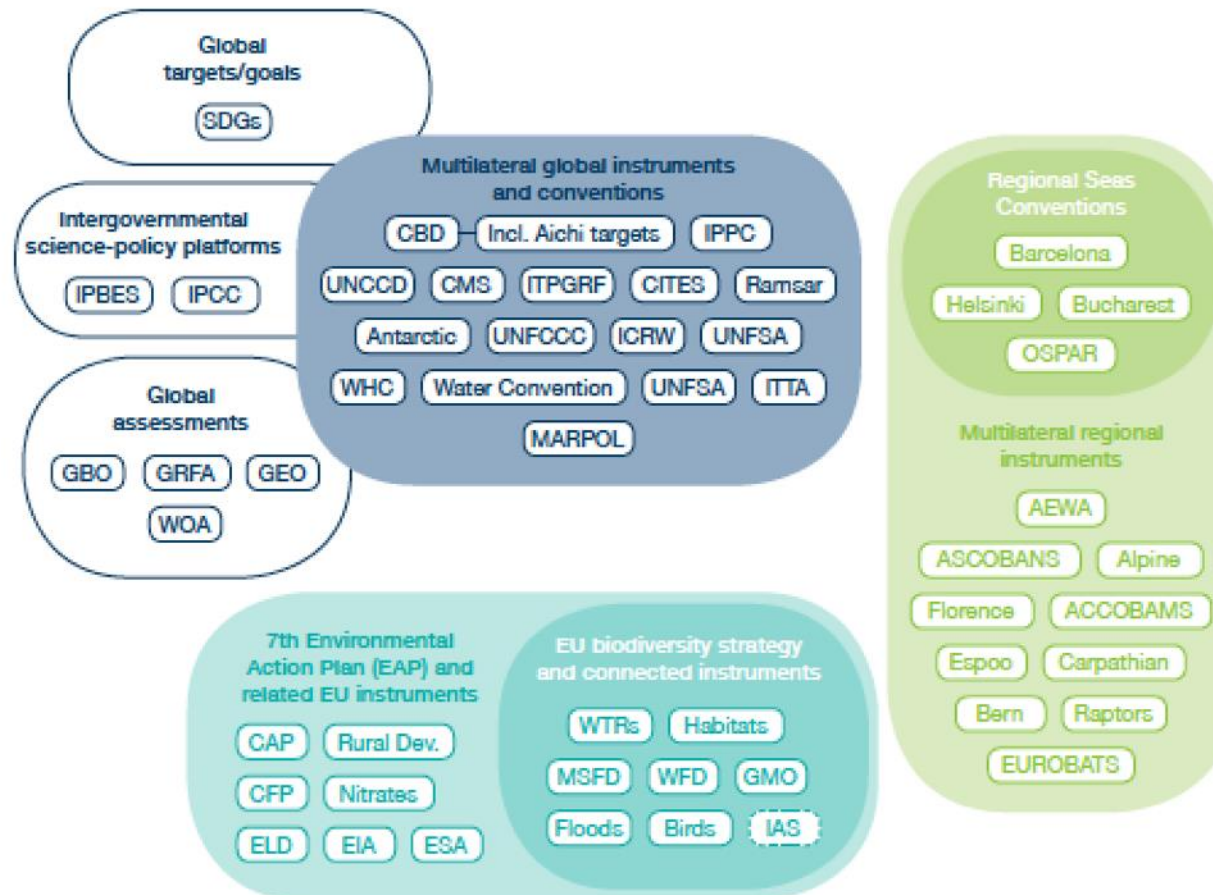
Draft update Sept. 2023



1.
Identify

Identify which policy stakeholders you engage and/or target in your research proposal

- **Link your work to precise conventions, agreements, policies** and/or policy tools (and possibly precise objectives of these).



Overview of the EU and global biodiversity policy landscape, being updated for Sept. 2023. After Wetzel et al. (2015)

BiodivERsA Guide on policy relevance of research

Draft update Sept. 2023



1.

Identify

Identify
which policy
stakeholders
you engage
and/or target in
your research
proposal

- **Link your work to precise conventions, agreements, policies** and/or policy tools (and possibly precise objectives of these).
- **Think about which policy stakeholders you are seeking to engage/inform, and why**

Proposed categories:

Policy makers: responsible for, or involved in, the formulation and/or adoption of policies. Can be involved in different stages of the policy process (e.g. formulation, adoption, implementation, monitoring and evaluation)



Policy advisors: official person or organisation/institution that provides ideas or plans used for policy formulation, adoption and/ or implementation (can be either policy anchored or evidence anchored)



Support tools: tools that can support science-policy interfacing for research projects. These can be online repositories, platforms, etc.



Boundary organisations: facilitate collaboration and information flows between the research and public policy communities (possibly with own agenda)



BiodivERsA Guide on policy relevance of research

Draft update Sept. 2023

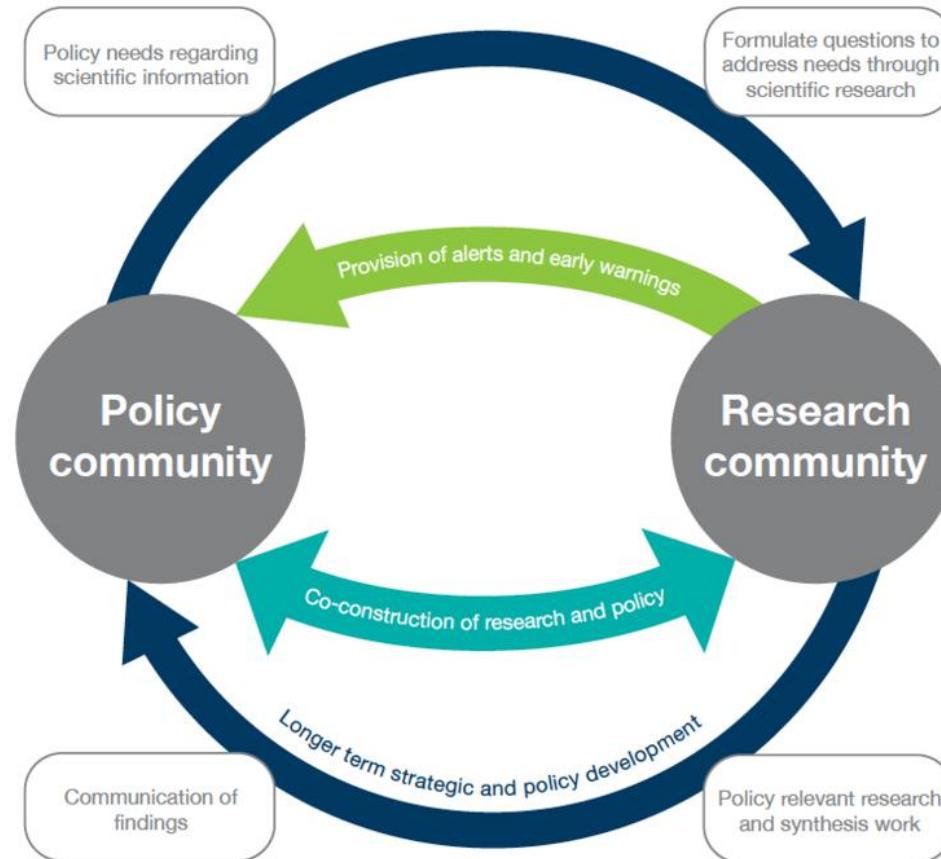


E.

Engage

Engage with policy stakeholders and promote science/policy interfacing within your research proposal

➤ Proposed overview of the broad approaches to science-policy interfacing



- **Early warnings and alerts:** e.g. study of temporal changes in insect biomass published in Plos ONE (Hallmann et al. 2017)
- **Longer term strategic and policy development:** e.g. work on biodiversity scenarios stimulated by the IPBES, members of the IPBES and IPBES stakeholders
- **Co-construction of research and policy:** collaboration between research and policy in defining the research questions, implementing the research project, interpreting, and disseminating the research results

BiodivERsA Guide on policy relevance of research

Draft update Sept. 2023



E.

Engage

Engage
with policy
stakeholders
and promote
science/policy
interfacing within
your research
proposal

➤ Think about the expected policy impacts you aim for

Proposed categories:

- **Attitudinal or behavioural change**, i.e. framing debates and getting issues on the political agenda
 - *Drawing attention to new issues, currently not part of the policy debate*
- **Procedural change**, i.e. change in the procedures through which policy decisions are made
 - *Not necessarily a change in policy content, rather about improved dialogue and reforms over time*
- **Change in policy content**, i.e. affecting policy making
 - *Either in policies themselves (new legislation) or position of policy-makers regarding existing processes*
- **Change in policy implementation**, i.e. affecting the way policy is implemented
 - *Successful policy change also depends on policy implementation, which can be as effective as change in content*

BiodivERsA Guide on policy relevance of research

Draft update Sept. 2023



V.

Value

Value the European and international policy implications of your transnational research proposal

➤ Think about how you will engage different stakeholders

Not all stakeholders need to be engaged in the same “intensity”, depending on your specific aims, their role, and possibly time available. Pay attention to:

- **The level of engagement**, i.e. informing, consulting, involving or collaborating with stakeholders
- **The timing of engagement**, i.e. before, during, after the project, or any relevant combination
- **The methods of engagement**, depending on your aims
- **Plan the dissemination and uptake of your results** thoroughly, i.e. who, why, how, when. Communicating on limitations and uncertainty is also a key component here.

➔ Find out more in the **BiodivERsA Stakeholder Engagement Handbook** (<http://www.biodiversa.org/stakeholderengagement>)

BiodivERsA Guide on policy relevance of research

Draft update Sept. 2023



V.

Value

Value the European and international policy implications of your transnational research proposal

- **i.e. demonstrate it, and make it explicit**
(likely linked to the first 3 S.I.E.V. elements)

International added value of a project in BiodivERsA calls is not necessarily linked to policy implications, but when this is the case, it is key to:

- **Demonstrate the international added value** compared to a national project, including for policy-making
- **Explicit the international added value** for policy, and not just assume it will be understood, e.g. performing a transnational research across different climatic gradients covered by a given policy, etc.

➔ **International added value for policy-making can also arise from national/local research and engagement work**

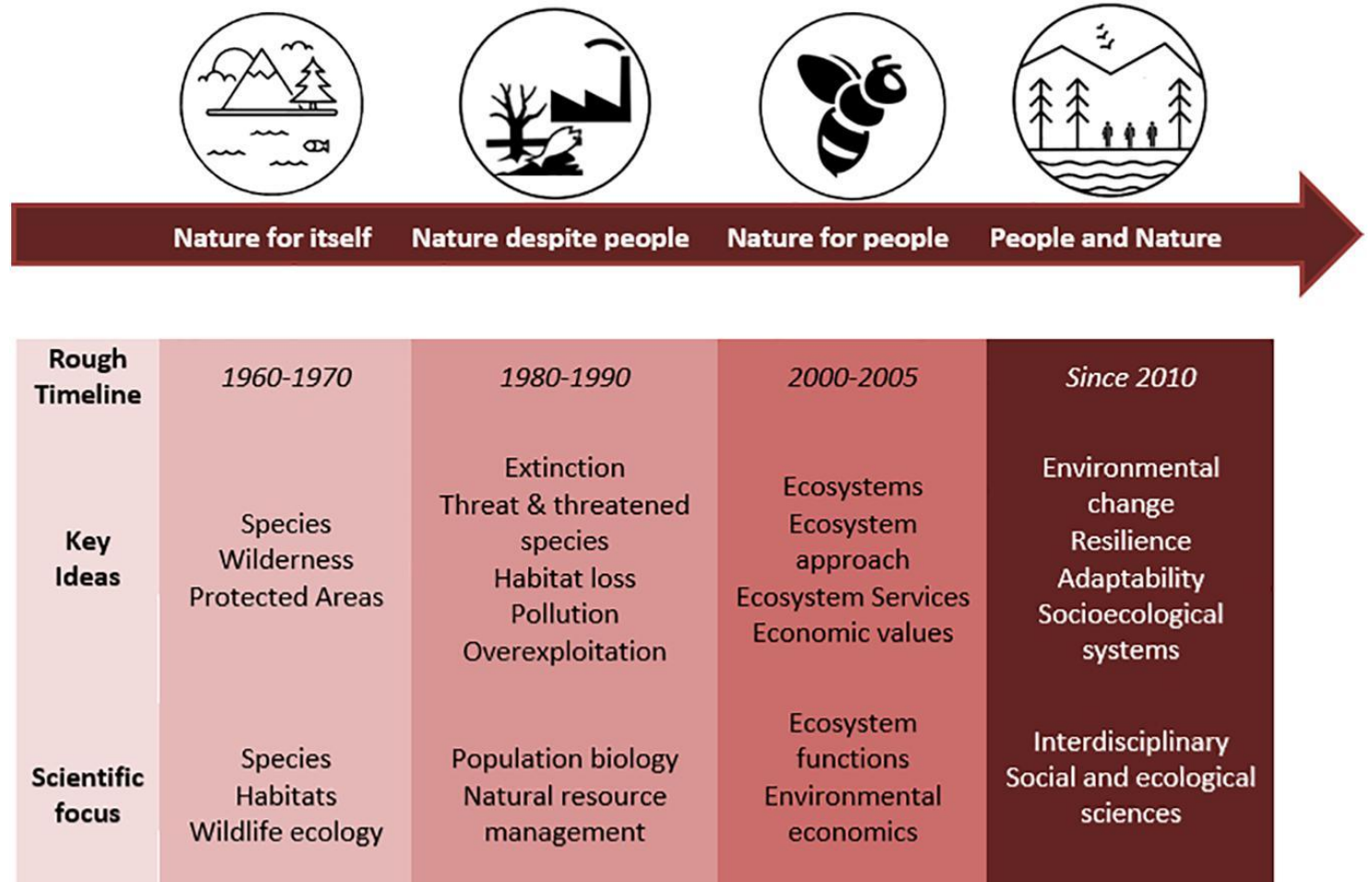
Why does integration of SSH matter in research on biodiversity?

NetworkNature European roadmap for R&I on NBS
Biodiversa+ forthcoming draft guides (sept. 2023)

What are we talking about?

Changes in the philosophical framing of conservation over 50 years and the resulting shifts in practical focuses

Adopted from Mace, G.M. (2014). *Whose conservation?* Science 345, 1558–1560



What are we talking about?



The social sciences, humanities and related topics of study.

From Bennett et al (2017)
Conservation social science: Understanding and integrating human dimensions to improve conservation, Biological Conservation

NetworkNature roadmap to 2030 for European R&I on NBS



- ✓ Takes stock of EU research, implementation, and coordination efforts on NBS
- ✓ Develops a common vision and meeting point for the coordination and development of EU R&I on NBS

Co-developed with experts and stakeholders from policy, practice and business

Strong integration of natural and social sciences and humanities throughout, in a transdisciplinary vision of R&I

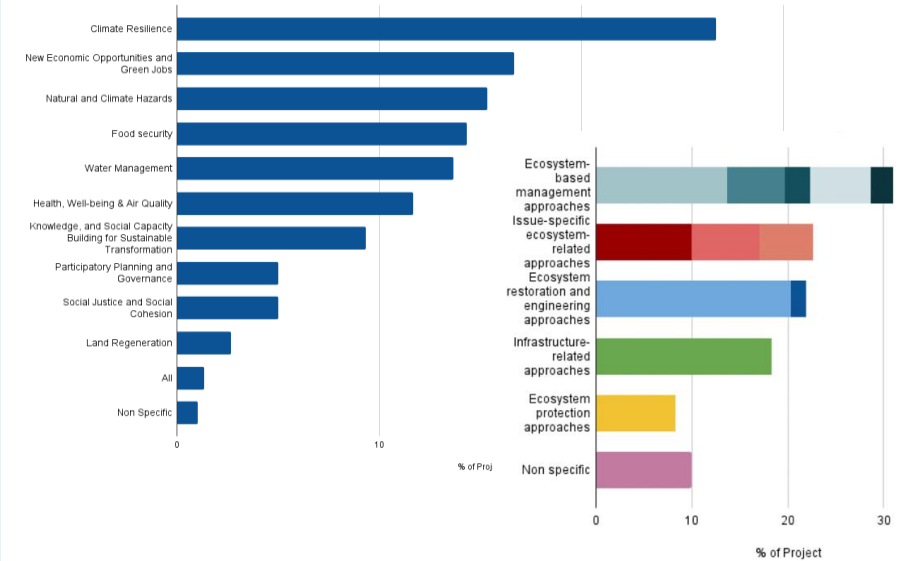
NetworkNature roadmap to 2030 for European R&I on NBS



✓ Takes stock of EU research, implementation, and coordination efforts on NBS

✓ Develops a common vision and meeting point for the coordination and development of EU R&I on NBS

- Analysis of EU-supported R&I and implementation projects on NBS
 - *Searchable database of projects*



- Stock-take of progress on 2017 EC research policy objectives

NetworkNature roadmap to 2030 for European R&I on NBS



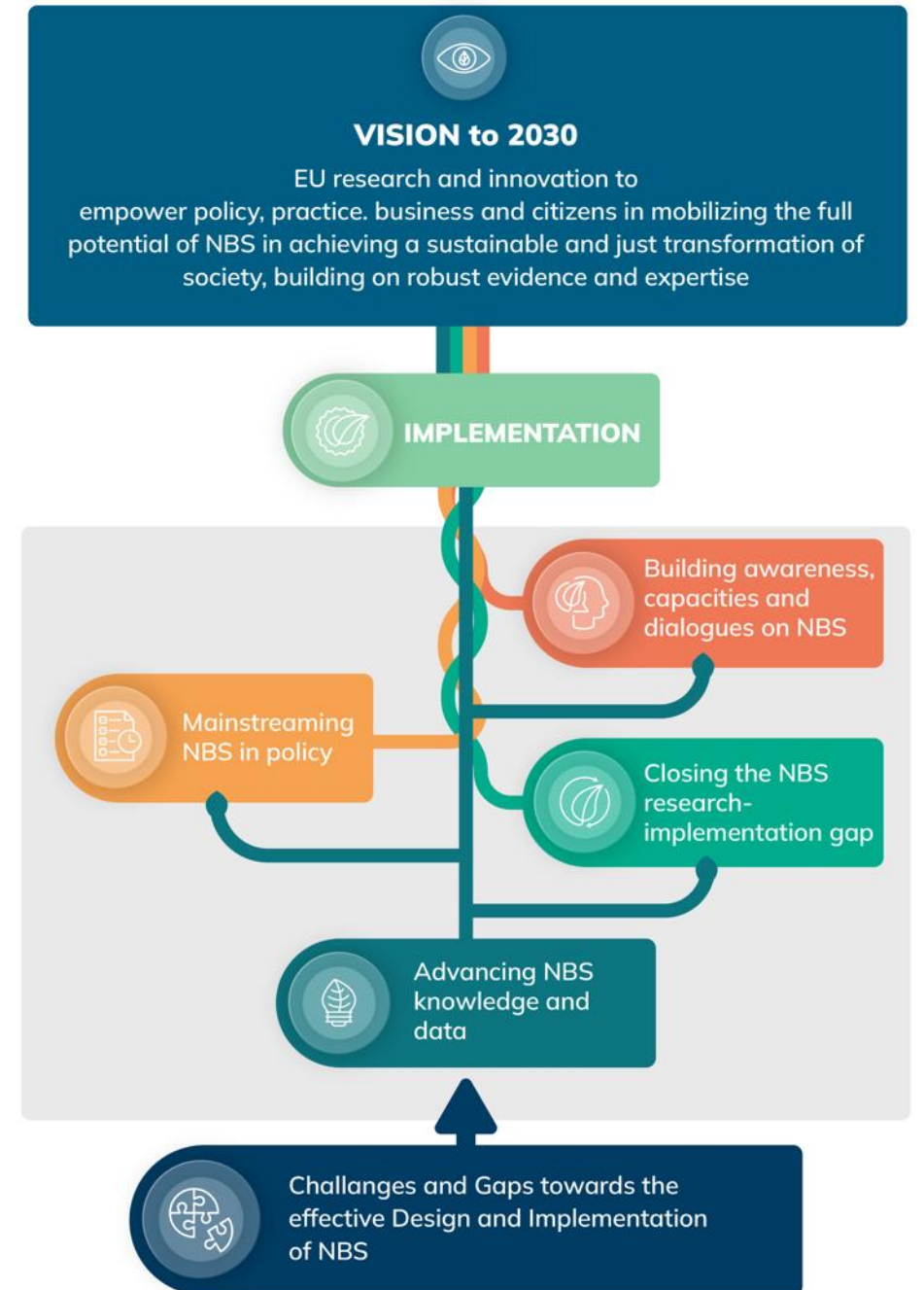
- ✓ Takes stock of EU research, implementation, and coordination efforts on NBS
- ✓ **Develops a common vision and meeting point for the coordination and development of EU R&I on NBS**

- Review of NBS knowledge gaps in EU R&I literature
 - *Searchable database of knowledge gaps*
- Co-development of a common vision and core action areas for EU NBS R&I development to 2030

NetworkNature roadmap to 2030 for European R&I on NBS



- ✓ Takes stock of EU research, implementation, and coordination efforts on NBS
- ✓ Develops a common vision and meeting point for the coordination and development of EU R&I on NBS



Overview of planned guides

Guide on the effective integration of natural and social sciences

- Showcase good practices in integrating natural and social sciences in research applications/projects
 - Theories and insights from literature
 - Case studies from Biodiversa projects and others
 - Useful resources/tools/platforms

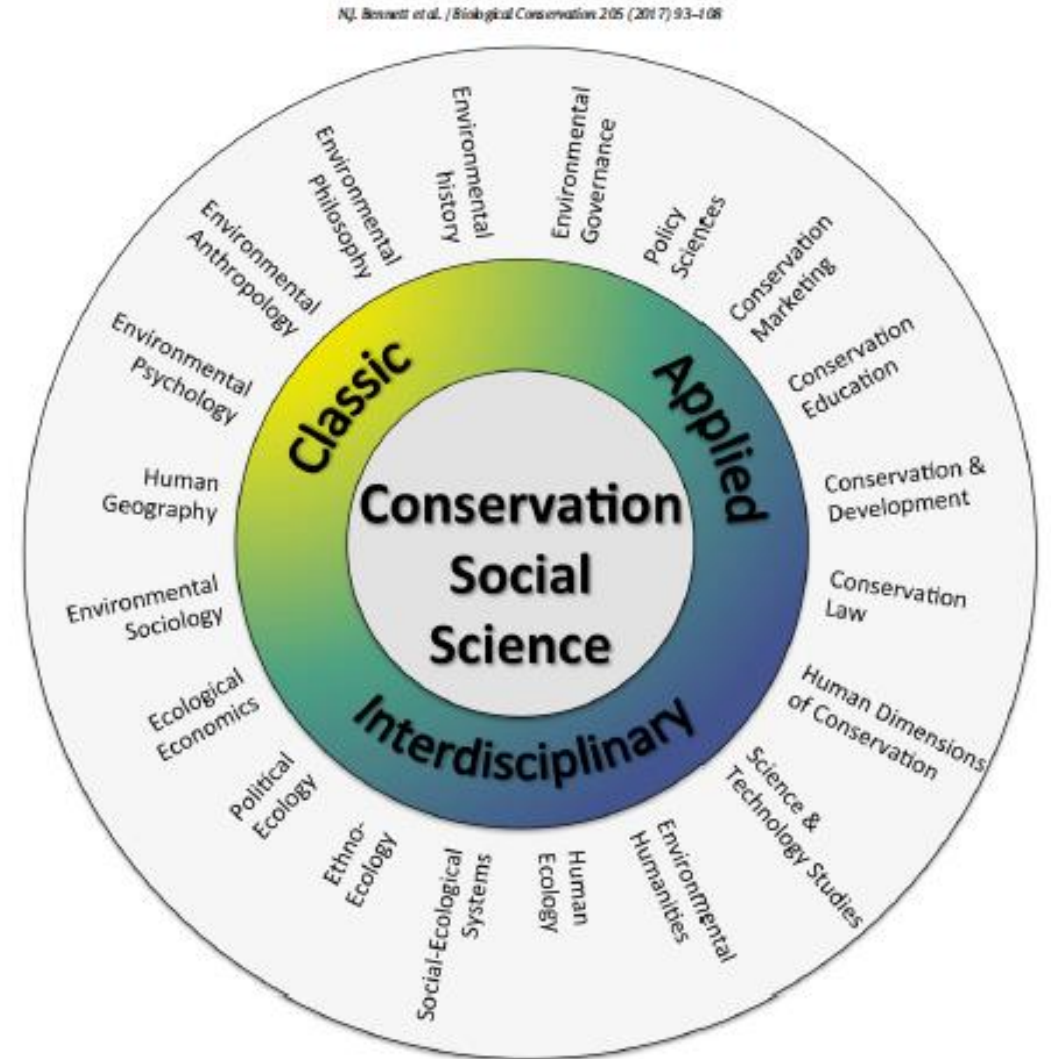


Fig. 3. The conservation social sciences – classic, interdisciplinary and applied traditions.

Overview of planned guides

Guide on engaging with the EU (and international) **NBS R&I** landscape

- From Biodiversa+ to help address complexity of landscape and promote use of initiatives/existing work
 - Introduction to NBS, concepts, related policy processes and landscape of initiatives for researchers to engage with at EU level, and EU action on NBS at international level
 - Highlight previous work, learning/sharing platforms on NBS, and key resources
 - Builds on initial mapping of EU NBS coordination and support initiatives and tools

Additional guidance and resources

The stakeholder engagement handbook



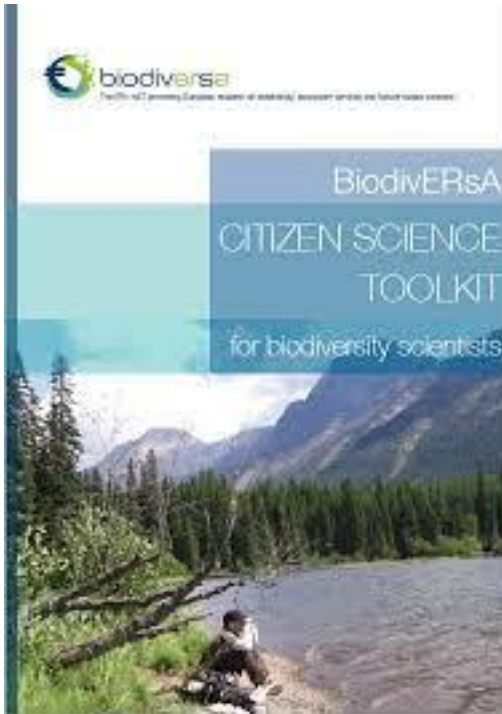
It will help you identify relevant stakeholders to engage with in order to enhance the impact of your work.

The Handbook draws upon exiting literature and presents case studies that provide clear, simple guidance, which considers **‘why’, ‘who’, ‘when’ and ‘how’ to engage.**

Contents:

- PART 1: INTRODUCTION
- PART 2: WHY ENGAGE WITH STAKEHOLDERS
- PART 3: HOW TO IDENTIFY STAKEHOLDERS
- PART 4: WHEN TO ENGAGE WITH STAKEHOLDERS
- PART 5: METHODS FOR ENGAGEMENT
- PART 6: PLANNING THE DETAIL OF THE ENGAGEMENT
- PART 7: MANAGING STAKEHOLDER CONFLICT
- PART 8: MONITORING AND EVALUATING THE ENGAGEMENT

The Citizen Science Toolkit



With this Toolkit you will :

- Get a better overview and understanding of what Citizen Science is;
- Figure out all the benefits of adopting Citizen science approaches;
- Have access to a list of the most relevant publications and most useful tools for Citizen Science;
- Discover many examples of Citizen Science projects and testimonies from researchers;
- Find out how to overcome the most common perceived challenges.

Guidance document on data management, open data, and the production of Data Management Plans

Biodiversa+ encourages open sharing of research data and digital outputs to stimulate new approaches to the collection, reuse, analysis, validation and management of data and information, thus increasing the transparency of the research process and robustness of the results.

- Applicants are thus requested to submit
 - Preliminary data management information in their pre-proposals
 - A first Data Management Plan in their full proposals

To help you, consult our guidance document & learn more about

- Main principles and policies for data management
- Existing tools and resources
- & Get advice on the writing of your data management plans





biodiversa+
European Biodiversity Partnership

EUROPEAN PARTNERSHIP



Co-funded by
the European Union

Thank you!



www.biodiversa.org



contact@biodiversa.org



BiodiversaPlus

